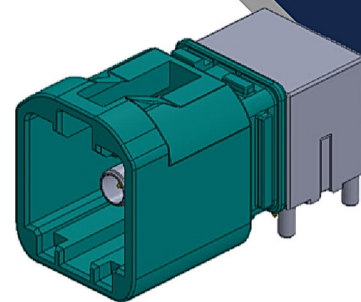


## 92804 Series Mini FAKRA Male Conn. T/H R/A Quad Type



### Overview

The mini-FAKRA connector series is the latest automotive interconnect technology for high data transmission. The space-conscious and high-performance modular design gives a more extensive application under the increasingly strict and precise automotive industry requirements. They are reducing installation space requirements by up to 80% compared with traditional FAKRA products. High coding efficiency and color management prevent misuse of connectors and use more ergonomics.

### Applications

- 360° Surround View Camera
- ECUs and Compute Modules
- Autonomous Vehicles
- Advanced Driver Assistance Systems (ADAS)
- GPS Navigation
- 3D Instrument Cluster
- High Bandwidth Infotainment
- Remote Start and Vehicle Controls
- V2X Communication

#### Mini Fakra 92804

| Item                      | Spec.                           |
|---------------------------|---------------------------------|
| Power Current             | $\leq 1$ A DC                   |
| Working Voltage           | $\leq 60$ V DC                  |
| Insulation Resistance     | $\geq 1 \times 10^3$ M $\Omega$ |
| Signal Contact Resistance | $\leq 15$ m $\Omega$            |
| Outer Contact Resistance  | $\leq 5$ m $\Omega$             |
| Temperature Range         | -40 to +105°C                   |

### Challenges

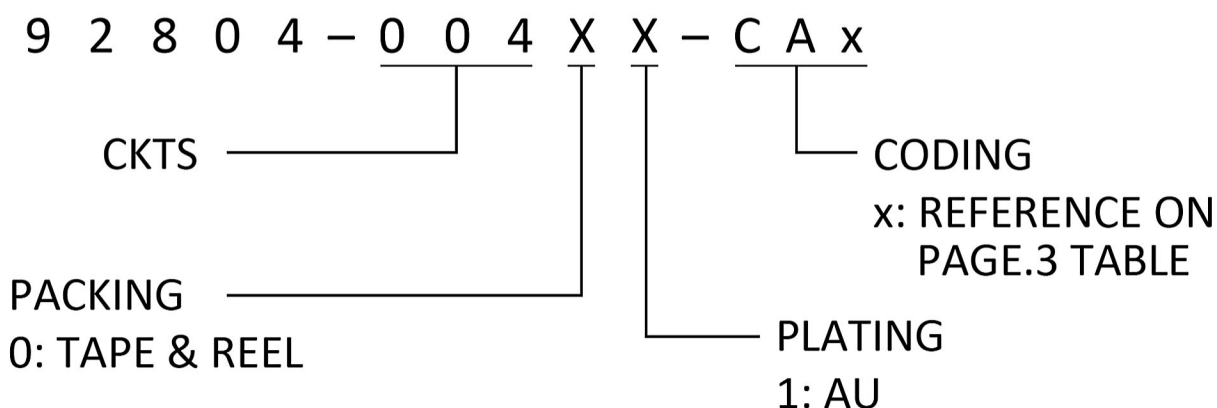
- Price advantage Save
- Modular space
- Can be customized according to customer needs
- Compliance with automotive specifications

### Features and Benefits

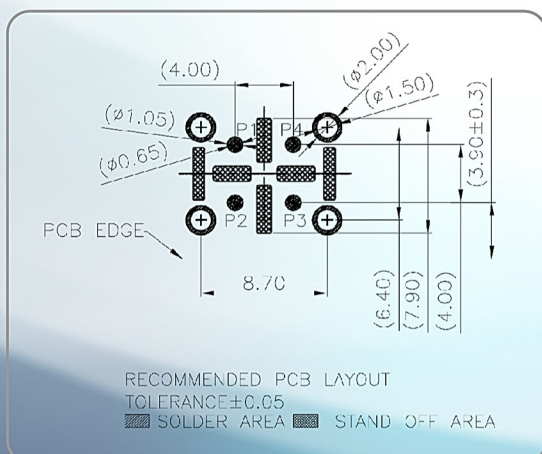
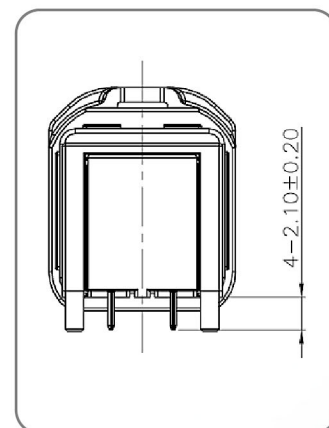
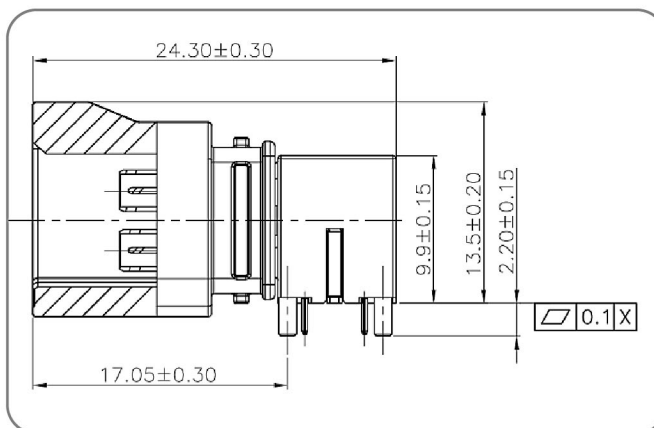
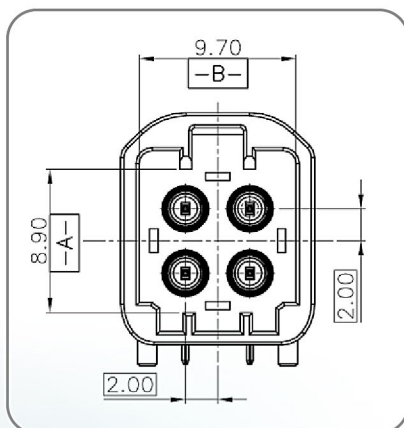
- Impedance: 50  $\Omega$
- Supports up to 9 GHz.
- High data rates up to 20 Gbps
- Temperature range from -40 °C to +105 °C
- Mating cycles  $\geq 25$
- Electromagnetic compatibility (EMC)
- Different mechanical and colored coding

## Product Number Structure

Refer to the information below when determining the product specifications from the product number.



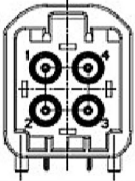
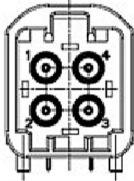
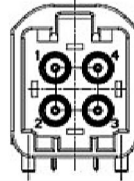
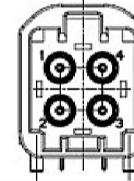
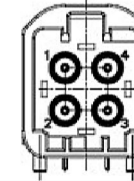
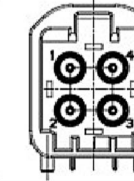
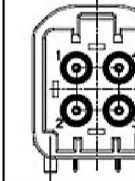
## Basic Specification



| No. | DESCRIPTION      | MATERIALS    | Q'TY |
|-----|------------------|--------------|------|
| 1   | HOUSING          | PLASTIC      | 1    |
| 2   | INSULATOR1       | PLASTIC      | 2    |
| 3   | INSULATOR2       | PLASTIC      | 2    |
| 4   | CENTER CONTACT 1 | COPPER ALLOY | 2    |
| 5   | CENTER CONTACT 2 | COPPER ALLOY | 2    |
| 6   | BODY             | ZINC ALLOY   | 1    |
| 7   | COVER            | ZINC ALLOY   | 1    |



## Basic Specification

| Coding |   |   |   |   |  |   |   |
|--------|---|---|---|---|--|---|---|
| Coding | A KEY   | B KEY   | C KEY   | D KEY   | E KEY  | F KEY   | Z KEY   |
| Plug   |  |  |  |  |  |  |  |
| Color  | Black   | White   | Blue  | Bordeaux  | Green  | Brown   | Waterblue   |
| RAL    | Sim. 9005   | Sim. 9010   | Sim. 5012   | Sim. 4004   | Sim. 6017  | Sim. 8011   | Sim. 5021   |